



Straight from the Hive



Blasdell Elementary

Spring 2024

FROM MRS. THURSTON'S DESK

It's PARP time! PARP stands for Pick A Reading Partner and promotes reading and we have an exciting calendar of events that will help facilitate our student's love of reading. Please join in the PARP fun and read each night with your child. Our new Book Vending Machine is another opportunity for our students to engage in reading and it also promotes our Keys For Success. Thanks to your continued support and our amazing PTA, we had another successful Book Fair! Research has found that parental or family involvement in school-based learning activities is correlated with improved student outcomes. We look forward to the remainder of the school year and we hope to see you at the upcoming in-school and evening events.

FROM NURSE LOVE'S DESK

Welcome spring! I would like to remind all parents that classrooms do go out for recess everyday. Wearing sneakers everyday is important for their safety.

Please do not send students in with sandals or flip flops. Having a change of clothes here at school for those occasional accidents is helpful too. If your child is having any type of medical procedure done please let me know, we will need a medical note for returning to school with no restrictions.

If any questions please call the school and ask for Nurse Love.



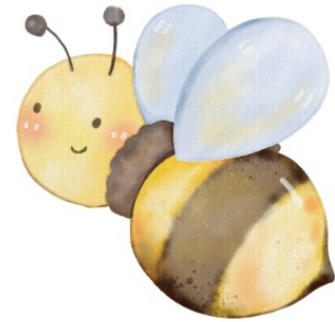
Thank you.

MARK YOUR CALENDARS

March 14th	Spring Open House
March 14th	PTA Chicken BBQ
March 20th	Family Night
March 27th	PTA Meeting 6pm
March 29th	No School
April 1-5th	Spring Recess
April 8th	No School
April 5th-May 17th	NYS Testing
April 24th	PTA Meeting 6pm
April 19th	Early Release
May 1st	Gr. 4 & 5 Band & Gr. 5 Jazz 6:30pm
May 2nd	Gr. 4 & 5 Orchestra Concert MS 7pm
May 3rd	PTA Boys & Special Girl Event
May 8th	Gr. 4 & 5 Chorus 6:30pm

MARK YOUR CALENDARS CONTINUED

May 20th, 22nd, 29th & 30th	Kindergarten Screening
May 22nd	PTA Meeting 6pm
May 23rd	Annual Art Show 5:30-7pm
May 24th	No School
May 27th	No School
June 3rd	Gr. 5 Track Meet
June 6th	Gr. 5 Class Day
June 7th	Field Day and PTA Picnic
June 14th	Flag Day
June 18th	Gr. 5 Awards Assembly
June 19th	No School
June 21st	Early Release
June 24th	Early Release - Last Day of Attendance



FROM THE STUDENT SUPPORT TEAM

Ways to Cope

- Keep a journal.
- Download an app with relaxation exercises.
- Exercise and eat healthy.
- Get regular sleep.
- Avoid excess caffeine.
- Identify and challenge your negative thoughts.
- Reach out to your friends and family.



FAMILY ENGAGEMENT NIGHT

WHEN MARCH 20TH
TIME 6-8PM
WHERE BIG TREE ELEMENTARY

WHAT IS IT?

A NIGHT FILLED WITH FUN, FAMILY!
Join us for light refreshments, community resources, information, the Frontier Food Truck, a magician and much, much more! See you there! This is a special event for Big Tree and Blasdell Elementary families.